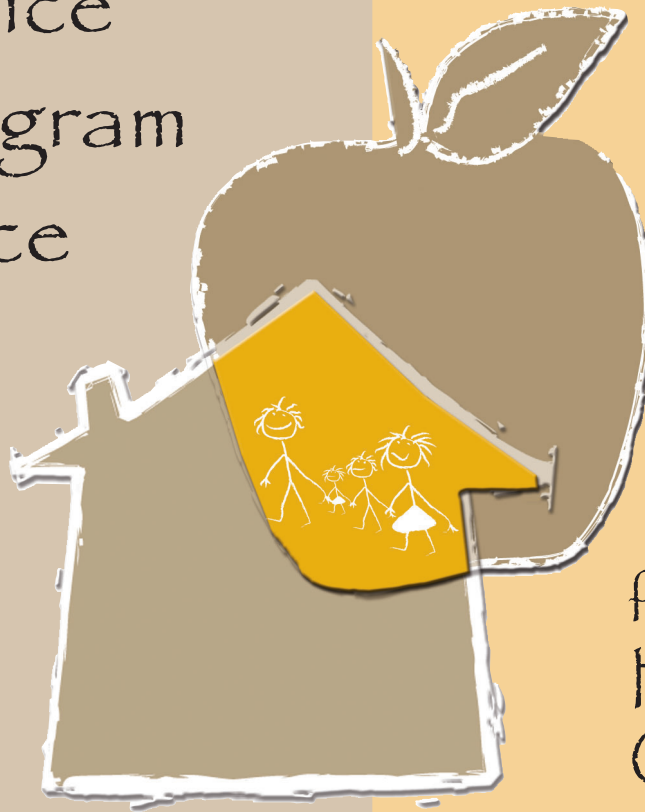




A Service and Program Resource Guide



for Families in
Hillsborough
County



A Service and Program Resource Guide

for Families

in Hillsborough County



This manual is a product of the Collaboration and Family Involvement Project in Functional Assessment H324M000049. and created in partnership with the School District of Hillsborough County Exceptional Student Education and Family Network on Disabilities Inc. Many thanks to Jean Caldicott, parent, for all of her research and tenacity in putting this manual together

TABLE OF CONTENTS

HELPFUL LOCAL RESOURCES FOR HILLSBOROUGH COUNTY FAMILIES OF CHILDREN WITH BEHAVIORAL AND/OR EMOTIONAL ISSUES.....	3
ABUSE - PREVENTION & REPORTING	3
AUTISM RESOURCES.....	4
CHILD/ DAY / AFTER-SCHOOL CARE	4
CHILD & YOUTH SERVICES	5
DEVELOPMENTAL PEDIATRICIANS AND NEUROLOGISTS.....	6
DISABILITIES	6
EMERGENCY SOCIAL SERVICES.....	7
EMPLOYMENT and TRANSITION SERVICES and RESOURCES.....	8
FAMILY SUPPORT SERVICES.....	8
FINANCIAL ASSISTANCE.....	9
FOSTER CARE and ADOPTION.....	10
HOMELESSNESS SERVICES.....	11
HOUSING	11
INFORMATION & REFERRAL	12
LEGAL SERVICES.....	12
MEDICAL & DENTAL SERVICES.....	13
MENTAL HEALTH SERVICES & SUPPORTS	14
MIGRANT SERVICES.....	16
PARENTING RESOURCES.....	17
RESIDENTIAL PROGRAMS.....	17
RESPITE	18
SCHOOLS	18
TRANSPORTATION	18
 HELPFUL STATE RESOURCES FOR FLORIDA FAMILIES OF CHILDREN WITH BEHAVIORAL AND/OR EMOTIONAL ISSUES.....	 20
 HELPFUL NATIONAL RESOURCES FOR FAMILIES OF CHILDREN WITH BEHAVIORAL AND/OR EMOTIONAL ISSUES.....	 23

HELPFUL LOCAL RESOURCES FOR HILLSBOROUGH COUNTY FAMILIES OF CHILDREN WITH BEHAVIORAL AND/OR EMOTIONAL ISSUES

Many of these organizations have web sites. If you do not have access to a computer at home, ask your child's teacher if your school has a computer families can use to log on to the internet or visit your local public library for free internet access. Many libraries limit users to a certain number of minutes at a time.

ABUSE - PREVENTION & REPORTING (SEE ALSO **CHILD & YOUTH SERVICES**)

Apple Services

209 S. Morgan St. Tampa, FL 33602
813-228-0011

Individual therapy, parent education & support for children ages 3-17 who are affected by sexual abuse, treatment for juvenile sexual offenders and adult rape victims.

Abuse Reporting Line 1-800-96-ABUSE (See Statewide resource section for more information on this service)
http://www5.myflorida.com/cf_web/myflorida2/health/human/childabuse/

Child Abuse Council

3108 W Azeele St. Tampa, FL 33609
813-673-4646

<http://www.child-abuse-council.org>
Parenting education in order to prevent and identify child abuse and neglect. Specialized programs: Fathers Resource & Networking Center, Parents Support Groups, Rainbow Family Learning Centers, New Life Dwelling Place, Kids on the Block, Healthy Start, Healthy Families, Parents as Teachers.

Children's Advocacy Center

419 Pierce Street, Suite 288 Tampa, FL 33602
813-272-7179

<http://jud13.flcourts.org/cac.htm>
Case management services on-site for children and families. In collaboration with the Child Protection Team at Tampa General Hospital, case managers are co-located to provide services to other children and families, when the alleged perpetrator is in a caretaker role. CAC staff provide case management services when the alleged perpetrator is a non-caretaker, such as stranger or child-on-child victimization. Depositions of children in who may be the victim or witness of a crime.

Children's Home Society

GULF COAST DIVISION

7454 Palm River Rd. Tampa, FL 33619
813-740-4266

<http://www.chsfl.org/>

Spectrum of social services, including foster care, adoption, child abuse prevention, emergency shelters, group homes, case management, and treatment for developmentally disabled children.

Child Net - TGH Child Protection Team

1 Davis Blvd Suite-410 Tampa, FL 33606
813-251-8007

Services for families dealing with the issues of sexual abuse.

Domestic Violence Program (TGHCPD)

702 Alsobrook St. Plant City, FL 33566
813-707-9881

813-251-8007

Plant City, Dover, Seffner, Thonotosassa, Brandon, Valrico, East Hillsborough County
Multidisciplinary services including case management, case staffing, sheltering, home visits, field visits, short term counseling, advocacy and escorting through legal proceedings, other referrals.

Joshua House

813-949-8946

<http://www.joshuahouse.com/default.asp>

Emergency shelter care and residential group care services for abused, abandoned, and neglected children. Operated by Children's Home Society.

Local Sexual Abuse/Assault Hotline
813-234-1234

Mary & Martha House
P.O. Box 1251 Ruskin FL 33570
813-645-7874
A private, non-profit emergency housing shelter for women and children.

Protective Services for Children - Tampa (Department of Children & Families)
9393 N. Florida Ave. Tampa, FL 33612
813-558-5900
Investigates child abuse and neglect. Provides counseling and supervision for families under stress.

Spring of Tampa Bay
PO Box 4772 Tampa, FL 33677
813-247-7233
24 hour emergency shelter for victims of domestic violence and their dependent children who have no other safe place to go. Outreach, childcare, and case management also available.

AUTISM RESOURCES
(SEE ALSO DISABILITIES)

Hillsborough County Autism Support Group is now part of KIDDS (Families and Friends of Individuals with Developmental Disabilities)
Meets the 3rd Thursday of the month Sept. - May
Time: 6:30 - 8:30 p.m.
Place: TBA
For information contact:
Jean Reese at jeanreese@myrapidsys.com
Phyllis Guthman at 813-837-7732 or
pguthman@gte.net

Center for Autism and Related Disabilities (CARD)
Louis de la Parte Florida Mental Health Institute
University of South Florida
13301 Bruce B. Downs Blvd. MHC2113-A
813-974-2532
Toll-Free Florida Only: 1-800-333-4530,
<http://card-usf.fmhi.usf.edu/>
CARD provides information for autism related questions. CARD serves children and adults of all levels of intellectual functioning who have autism spectrum disorder (including autism, Asperger's disorder, childhood disintegrative disorder, Rett's disorder, or pervasive developmental disorder not otherwise specified); an autistic-like disability (documented on an evaluation that describes the characteristics that are being considered "autistic-like" by the evaluator); a dual sensory impairment; or a sensory impairment with other disabilities. For children aged 0 to 8 years, a developmental disability diagnosis with documented evidence of autistic-like behaviors qualifies a child for services.

CHILD/ DAY / AFTER-SCHOOL CARE
SEE ALSO Positive SPIN under Family Support Services

Brighter Community, Inc.
1613 N. Marion St. Tampa, FL 33602
813-223-6830
Preschool children of working parents or parents who are enrolled in job training programs.

Early Childhood Learning Programs (School district)
Main number: 744-8941
Subsidized Childcare (ext. 226)
Head Start (School district – located at schools) (ext. 365)
Prekindergarten Early Intervention Program (ext. 382)
Prekindergarten Exceptional Education (ext. 291)

FIFA - Collaboration and Family Involvement in Functional Assessment
The Louis de la Parte Florida Mental Health Institute
University of South Florida
13301 Bruce B. Downs Blvd. MHC2113A
Tampa, FL 33612-3807
Bobbie Vaughn 813- 974-6104
<http://fifa.fmhi.usf.edu>

The goal of this project is to design a model, in partnership with local schools and Family Network on Disabilities, that school districts can use to increase parental participation in the functional behavior assessment (FBA) process and the development of positive behavior interventions and supports (PBIS).

Head Start/Early Head Start (County – not the same as school district Head Start)
4817 N. Florida Ave. Tampa, FL 33603.
813-272-5140
Head Start and Early Head Start are early childhood programs for low-income parents of children ages prenatal through age 4, including those with special needs. Education, health care, parent involvement, and social services. Hillsborough County operates full-day, full-year centers for working parents, a home-based program, and a special option for pregnant women. (The Hillsborough County School Board also operates part-day, part-year classrooms in many elementary schools. Call for location nearest you.

Latch Key after school care (currently at 35 schools in Tampa area)
(YMCA) 110 Oak Ave. Tampa, FL 33602
813-223-2895
<http://www.tampaymca.org/youthservices.html#latchkeyanchor>

Partners In Care Child
Care Resource & Referral
813-744-8941
Provides child care referrals and information on evaluating quality child care, plus resources on various parenting issues.

Police Athletic League (PAL)

1924 W Diana St. Tampa, FL 33604

813-876-9363

<http://www.baylink.net/pal/>

Daily after-school care and pickup from several Hillsborough County elementary schools, sporting programs and an alternative to out-of-school suspension program for middle schools "CHOICE."

PAL also operates a supervised summer care program targeting "At-Risk" inner-city children.

CHILD & YOUTH SERVICES**(SEE ALSO ABUSE – PREVENTION AND REPORTING)****Big Brothers & Big Sisters**

405 N. Reo St. Suite 260 Tampa, FL 33629

813-287-2210

<http://www.bbbsfl.org>

Mentoring program.

Boys & Girls Club

3030 W. Laurel St. Tampa, FL 33607

813-875-5771

<http://www.bgctampa.org>

Child care for children 5/6-18

Child & Family Counseling Services**Intake & Non-Residential Counseling Offices**

Family and individual counseling and referral services for youths 5-17 years of age. Call, walk-in or referral from court, police or school.

207 Beach Place Tampa, FL 33606

813-272-6606

3105 W. Waters Ave., Suite 101 Tampa, FL 33614

813-903-3455

813-272-6606

9260 Bay Plaza Blvd. Suite 505

Tampa, FL 33619

813-744-5953

813-272-6606

Child Care Licensing

8900 N. Armenia Ave. Suite 210

Tampa, FL 33604-1067

813-272-6487

The office licenses and regulates the operation of child care centers and family child care homes in Hillsborough County. Child care centers and family child care home files are available for review by parents who are seeking child care.

Children's Board

1205 E. 8th Ave. Tampa, FL 33605

813-229-2884

<http://www.childrensboard.org/>

The Children's Board funds child and family services; plans and coordinates services; advocates changes in local, state and government policy; promotes awareness of issues affecting children and families;

works with neighborhoods to establish services that meet community needs; and encourages collaboration among funders and service providers

Children's Services Department

Administrative Offices: 3110 Clay Mangum Lane, Tampa, FL 33618

813-264-3821

Residential and non-residential services for children and parents. For emotionally handicapped youth, there are day treatment and residential care services designed to modify the behavior of emotionally dysfunctional children. For runaway and ungovernable children and their families, there are counseling services to reunite families and prevent runaway behavior, as well as short-term residential respite and shelter. Emergency shelter care is available for dependent, abused or neglected children. Also, there are training classes for parents to improve parenting skills.

Emergency Shelter Care Program, Severely Emotionally Disturbed Treatment Services & Foster Care Group Home

3110 Clay Mangum Ln. Tampa, FL 33618

813-264-3807

Haven W. Poe Runaway Center

207 Beach Place Tampa, FL 33606

813-272-6606

Provides residential and non-residential services to children who have run away from their homes and need counseling and shelter and/or counseling. Program also offers individual and family counseling.

Kids Behavioral Helpline

601 E. Kennedy Blvd. 13th Floor Tampa, FL

813-960-1010

Provides a central helpline for families or individuals to obtain information and referral related to children's mental health, emotional or behavioral issues.

Missing Children Help Center

410 Ware Blvd., Suite 710 Tampa, FL 33619

813-623-KIDS (5437)

Works with law enforcement agencies throughout the U.S. to ensure physical protection of children Offers advice to parents of missing children on steps to take in searching for the children.

Phone-Friend (Latchkey Phonefriend)

12512 Bruce B. Downs Blvd. Tampa, FL 33612

813-681-6543

Telephone reassurance services for latchkey children. Volunteers are ready to help callers with homework or constructive activities.

TeenLink

One Crisis Center Plaza 202 W. Bearss Ave.
Tampa, FL 33613
813-236-TEEN (8336)

Directory of pre-recorded messages related to teen issues and gives options to speak to an operator from the crisis line for intervention

Y.M.C.A.

110 E. Oak Ave. Tampa, FL 33602
813-224-9622

<http://www.tampaymca.org>

The Tampa Metro YMCA operates 12 membership centers, 45 after school locations, an urban teen case work training and employment program, 100-acre day camp and multiple community development programs. Call for nearest location.

COUNSELING**SEE MENTAL HEALTH SERVICES****CRISIS SERVICES****SEE MENTAL HEALTH SERVICES,
EMERGENCY SOCIAL SERVICES AND
FAMILY SUPPORT SERVICES****DENTISTS****SEE MEDICAL SERVICES****DEVELOPMENTAL PEDIATRICIANS AND
NEUROLOGISTS****All Children's Hospital**

<http://www.dbpeds.org/>

880 6th Street S, Suite 240 St. Petersburg, FL 33701
727-892-6760

Henry Shapiro, M.D., Developmental Pediatrician,
727-892-6760;

Rebecca Sutphen, M.D., Geneticist, 727-892-8491

Flora Robinson, M.D. – Developmental Pediatrician

Nancy Carnevale, M.D.

Neuro Behavioral Developmental Pediatrician

Tampa Children's Hospital at St. Joseph's

Child Development Center

4144 North Armenia Avenue, Suite 375

Tampa, FL 33607

813-876-8316

Joseph Casadonte, M.D.

880 6th St. S., #430 St. Petersburg, FL 33701

727-892-4149

Jose Ferreira, M.D.

Pediatric Neurologist

2901 W. St. Isabel, Suite D Tampa, FL 33607

813-873-7367

Jose Foradada, M.D.

4730 N. Habana Ave., Suite 204 Tampa, FL 33614

813-874-2000

Maria Gieron, M.D.

Pediatric Neurologist

17 Davis Blvd., Suite 315 Tampa, FL 33606

813-259-8842

James Johnson, M.D.

Pediatric Neurologist

880 6th St. S., #430 St. Petersburg, FL 33701

727-892-4149

Mary Pavan, M.D.

Developmental Pediatrician (children 0-3)

801 6th St. S. St. Petersburg, FL 33731

727-892-4403

Eric Q. Tridas, M.D.

Developmental Pediatrician

Tampa Children's Hospital at St. Joseph's

Child Development Center

4144 North Armenia Avenue, Suite 375

Tampa, FL 33607

813-876-8316

**University of South Florida Department of
Pediatrics - Child Development & Neurology**

17 Davis Boulevard, Suite 200 Tampa, Florida 33606

813-259-8841

DISABILITIES

(This list is not exhaustive, but many of these organizations can help you find information on specific disabilities or on the services you are looking for)

Advocacy Center for Persons with Disabilities

Statewide toll-free number: 800-342-0823

Statewide web site: <http://www.advocacycenter.org>

Tampa Office:

Times Building Suite 513

1000 N. Ashley Drive Tampa, FL 33602

866-875-1794 or 813-233-2920

866-875-1837 (TDD)

Promotes, expands, protects and seeks to assure the human and legal rights of people through the provision of information and advocacy.

**Alliance for Citizens with Disabilities/ Americans
with Disabilities Act Liaison Hillsborough County**

601 E. Kennedy Boulevard

P.O. Box 1110 Tampa, FL 33601

813-276-2742 TTY: 813-301-7173

<http://www.hillsboroughcounty.org/agencies/acd/home.html>

Public awareness, education and advocacy on behalf of disability issues of concern to citizens in Hillsborough County.

Deaf and Hard of Hearing Services

8859 North Florida Avenue in the Northgate Plaza,
corner of Busch Blvd. and Florida Avenue
Tampa

813-933-4858 (voice or TTY)

<http://www.deafservicecenter.org>

Hearing testing and hearing aid sales and service, assistive device and TTY sales and distribution, case management, a Neighborhood Family Center featuring youth and family services, a highly specialized resource library, an apartment complex for deaf and hard of hearing residents and advocacy and community education.

Developmental Disabilities Program/Dept of Children & Families

1317 Winewood Blvd., Bldg. 3, Rm 325

Tallahassee, FL 32399-0700

850-488-4257 or 888-633-2301

http://www5.myflorida.com/cf_web/myflorida2/health/human/ddp/

Suncoast Region (includes Hillsborough)

9393 N. Florida Ave. Tampa, FL 33612

813-558-5540

Assists people who have developmental disabilities and their families. It also provides assistance to identify the needs of people with developmental disabilities and funding to purchase supports and services.

Family Care Council Suncoast Region

Charm Thometz

10913 Carrollwood Drive Tampa, FL 33618

(813) 932-2207

E-mail: charmt@TampaBay.rr.com

<http://fccflorida.org/>

Provides information & outreach to families, advises district on needs of families, makes recommendations on program implementation.

Family Network on Disabilities of Florida

2735 Whitney Rd. Clearwater, FL 33760

800-825-5736 (toll-free in Florida only)

727-523-1130

<http://fndfl.org>

Information on support groups and education resources for families of children with disabilities, and adults with developmental disabilities

HARC - Hillsborough Arc

7506 Arawana Ave. Tampa, FL 33614

813-931-9100

<http://www.hillsarc.com/>

Provides resources, opportunities and advocacy to empower children and adults with developmental disabilities to achieve maximum community independence.

Self Reliance, Inc. (Center for Independent Living)

11215 N. Nebraska Ave. Suite B-3

Tampa, Florida 33612-5774

813-975-6560 TDD 813-975-6636

<http://www.self-reliance.org/>

The Mission of Self Reliance, Inc. is to improve the quality of life for persons with disabilities through independent living programs and services.

Statewide Advocacy Network on Disabilities (STAND)

PO Box 172236 Tampa, FL 33672-0236

813-258-5700

<http://www.standadvocates.org>

Information related to the rights of persons with disabilities, special education law, and legal and administrative procedure to secure such rights. Trains resource members to assist individuals with disabilities and their families in the administrative procedures related to assuring a "free and appropriate public education" to such individuals. Referral panel of attorneys who are concerned with and interested in the rights of persons with disabilities.

Tampa Lighthouse for the Blind

1106 West Platt St. Tampa, Florida 33606-2142

813-251-2407

<http://www.tampalighthouse.org/>

Provides training and other services that are designed to help each person served to maximize his or her independence, including, if applicable, enhancing prospects for gainful employment.

DOMESTIC VIOLENCE

SEE ABUSE – PREVENTION & REPORTING, CHILD & YOUTH SERVICES, AND MENTAL HEALTH SERVICES

EDUCATION

SEE SCHOOLS

EMERGENCY SOCIAL SERVICES

(SEE ALSO ABUSE – PREVENTION & REPORTING, COUNSELING, FAMILY SUPPORT SERVICES, FINANCIAL ASSISTANCE, FOSTER CARE AND MEDICAL SERVICES)

American Red Cross

Tampa Bay Chapter

3310 W Main St. Tampa, FL 33607

813-348-4820

<http://www.redcrossbc.org/>

Possible services include home delivered meals, food pantries, rides to medical appointments, homeless shelters, transitional housing, caregiver education and support groups, friendly visitors, Lifeline®, hospital / nursing home volunteers, fuel assistance, HeadStart, latchkey programs, language banks and many more.

Crisis Center of Tampa Bay

<http://www.crisiscenter.com/>

One Crisis Center Plaza

Tampa, Florida 33613-1238

211 & Hotline Services: 813-234-1234

Crisis and suicide intervention and community resource referral, daily reassurance phone calls to the homebound elderly or disabled, short term economic assistance with case management, protective travel assistance, medical and/or mental health patient transportation, sexual abuse counseling for children and adults, forensic medical exams for sexual assault survivors, continuing education events, and volunteer opportunities.

EMERGENCY FOOD**SEE FINANCIAL ASSISTANCE****EMPLOYMENT and TRANSITION SERVICES and RESOURCES****Abilities of Florida, Inc.**

4221 N. Himes, Suite 105 Tampa, FL 33607

813-673-4600

Assists persons with physical or mental impairments.

Employment & Training, Division**North Tampa**

9215 N Florida Ave Ste 108 Tampa, FL 33612

813-903-3361 or 813-903-3362

Brandon

9225 Bay Plaza Blvd #417

Tampa, FL 33511

813-744-5919

Plant City

2001 E Cherry St

Plant City, FL 33566

813-757-3883

Vocational training to economically disadvantaged persons living in Hillsborough County; provides basic skills classes, vocational training, on-the-job-training as well as work experience for youth during the summer

Goodwill Industries-Suncoast (serves Hillsborough)

10596 Gandy Blvd. St. Petersburg, FL 33702

888-279-2988 or 727-523-1512

<http://www.goodwill-suncoast.org>

Hillsborough County Workforce Centers

9250 Bay Plaza Blvd. Suite 320

Tampa, FL 33619

813-744-5547

One stop career centers, focusing on helping people find jobs, training, careers. Call for locations in Hillsborough County.

Job Training Partnership Act (JTPA)

9215 N. Florida Avenue, Suite 108

Tampa, FL 33612

813-930-7675

Must meet low-income guidelines

Summer Job Program - City of Tampa

Tampa Parks Department

7525 N Blvd. Tampa, FL 33604

813-931-2121

Provides summer and/or all year jobs for youth. A school average of "C" or better is desired. The positions are not only in the Parks Dept., jobs of construction are plentiful.

Transition Contact

Hillsborough County School District

Kathleen Moore

1202 East Palm Ave. Tampa, Florida 33605

813-273-7030

E-mail: kathe.moore@sdhc.k12.fl.us

FDLRS Transition Contact

FDLRS/Hillsborough Associate Center

Jan Showalter

4210 West Bay Villa Ave.

Tampa, Florida 33611-1206

813 837-7777

Transition Center at the University of Florida

University of Florida

P.O. Box 117050 Gainesville, FL 32611-7050

Telephone: 352-392-0701

Resource Center: ext. 267

<http://www.thetransitioncenter.org>

Resources for all those working in the area of transition in Florida. Workshops, research, dissemination of products

Vocational Rehabilitation Services

4221 N Himes Ave., Suite 205

Tampa, Florida 33607-6200

813-871-7300

Work Experience Program

5410 N 20th St. Tampa, FL 33602

813-231-1865

Provides assistance for 7th – 10th grade students in finding jobs while in school.

FAMILY SUPPORT SERVICES

(SEE ALSO MENTAL HEALTH SERVICES AND PARENTING SERVICES)

Family and School Support Team - FASST

10630 N. 56th St., Suite 205 Tampa, FL 33612

813-977-8700

Area Served: North Hillsborough County.

These programs provide intensive family support and community and school-based services, to children ages 0-21, at identified school and community locations.

Family Support & Resource Center

University Mall - 2nd floor near Dillard's
12358 University Mall Court
Tampa, FL 33612
813-971-7019

<http://www.childrensboard.org/resourcecenter.html>

Library, Computer Station and Kids Korner - open to all members of the community. Resource Center staff available to assist visitors.

Positive Spin (Positive Support for Parents in Neighborhoods)

813-977-7677

Works directly with families to connect them with the appropriate community resources. See full listing under FINANCIAL ASSISTANCE

Think FASST

2206 E Henry Ave. Tampa, FL 33610
813-272-2244

Intensive family support, community and school-based services to children at identified schools & community locations.

**FARMWORKERS
SEE MIGRANT SERVICES****FINANCIAL ASSISTANCE
(SEE ALSO Emergency Services)****Community Action Program**

505 E. Jackson St., Suite 204 Tampa, FL
813-272-6770

Assists low-income households in meeting immediate home energy bills -- especially those with the lowest incomes that pay a high portion of household income for home energy. Eligibility includes residents who are 60 years of age and over, disabled/handicapped, homebound, and parents or guardians of children. Residents who have never received assistance through the program in the past will be given priority.

Family Support Services

One Crisis Center Plaza 202 W Bearss Ave
Tampa, FL 33613
813-264-9949

Provides low-income families, individuals, and homeless with a variety of economic and emotional services to help them become self-sufficient. Case management, emergency food, shelter, and transportation, rent, mortgage, utility assistance, and short-term crisis counseling.

Health & Social Services - Downtown (HCHSS)

2410 Tampa Street Tampa, FL 33602
813-272-5296

or

2103 N Rome Ave Tampa, FL 33607
813-272-5074

**Financial Assistance 813-272-5040 (see
Neighborhood Service Centers, below)**

Selective employment services for refugee clients and some General Assistance referrals: transitional case management with regard to employment and referral to other service providers. Also provides assistance in burials and assisted living services. Home visits to bed bound and homebound clients. They are also in charge of all County Licensed Boarding Homes.

Hunger Hotline

207 W Park Ave 1st Fl. Tallahassee, FL 32303
813-224-4774

Statewide information service that directs callers to emergency food resources.

Medicaid

Provides a program through which financially needy individuals can obtain medical assistance, food stamps, and temporary cash assistance.

You can apply for Medicaid at any Department of Children and Families (DCF) office.

Hillsborough Regional/Downtown

9393 North Florida Avenue

Tampa, FL 33612-7907

813/558-5500 (automated line)

http://www5.myflorida.com/cf_web/myflorida2/health/human/ess/Medicaid.html

The Social Security Administration determines Medicaid eligibility for elderly and/ or disabled individuals who are eligible for Supplemental Security Income (SSI) cash assistance.

To make an appointment at an office near you, call Toll-Free 1-800-772-1213

Online eligibility screening tool: <http://best.ssa.gov/>

Neighborhood Service Centers offer assistance at many locations. Contact Health & Social Services for nearest location.

County Center 601 E. Kennedy Blvd., 25th Floor
Tampa, FL 33602

813-272-5040

Call for the location nearest you.

Shelter, food, clothing, outpatient/inpatient care, boarding home services, burial/cremation, transportation, and dental services for qualifying low-income residents. Additional services include case management services, operation of Neighborhood Service Centers, the summer food program, assistance to veterans, consumer protection services, and child care licensing. KidCare Outreach

Not all services may be provided at every site. Call for information.

Positive Support for Parents in Neighborhood (+SPIN)

St James Place Apartments
12704 Crescent Oaks Pl. Tampa, FL 33647
813-977-7677

Emergency housing assistance due to evictions, unsafe conditions, and homelessness. Emergency food assistance, emergency financial assistance for electric or water, emergency medical assistance, employment assistance, bus vouchers. Referrals for furniture, infant supplies and clothing

Public Assistance

2103 N Rome Ave. Tampa, FL 33607
813-272-5040

Assistance in the areas of shelter assistance, employment, financial, food, medical services, self sufficiency, rent and utilities assistance.

St. Anne Catholic Church

106 11th Ave NE Ruskin, FL 33570
813-645-1714

Food pantry program geared toward families in need of food assistance, homeless and migrant workers in Ruskin area.

St. Vincent DePaul Society

2021 E Busch Blvd. Tampa, FL 33612
813-933-9729

Provides clothing, furniture, gasoline, rent and utility assistance with a referral. EFSP funds are available for emergency payments of rent/mortgage and utilities from this agency for the following zip codes only: 33606, 33609, 33629, 33611, 33616, 33613, 33614, 33617, 33637, 33618, 33624, 33647. Call for appointment. Documentation may be requested according to requested assistance.

Salvation Army Family Services

1603 N Florida Ave 2nd Fl. Tampa, FL 33602
813-226-0055

Emergency assistance and case management for clients in need of food, medication. Also provides financial assistance for a one-time emergency with rent/utilities.

SHARE Program

1603 N Florida Ave. Tampa, FL 33602
813-226-0055

Contributions received from customers and shareholders of TECO are given to the SHARE Program to provide assistance to the elderly and disabled who are having difficulty paying their electric, water, or gas bills.

Social Security Administration

1-800-772-1213 - Disability Determinations,
Department of Health
P.O. Box 292923 Tampa, FL 33687
813-983-3000

Determines eligibility for Social Security Disability payments. No direct services to clients. Must apply at

social security offices (call the 800 number, above, and they will make appointment for you at the appropriate office)

Summer Food Program

Lee Davis Neighborhood Service Center
3402 N. 22nd St., Room 227 Tampa, FL 33605
813-276-2092

Voice Mail: 813-224-8677

During the summer, youngsters throughout the County receive free breakfast, lunch and/or an afternoon snack through this program. Meals are served from mid-June to mid-August at city and County parks, YMCA daycare centers, Boys & Girls Clubs, churches, public housing auditoriums, and at other non-profit facilities where economically disadvantaged children congregate. All children 18 years of age or younger are eligible. No pre-registration is required.

WAGES - AFDC - Food Stamps - Medicaid 813-871-7411

FOSTER CARE and ADOPTION

(SEE ALSO Family Support Services, Residential Services)

Children's Home Inc., The

10909 Memorial Hwy. Tampa, FL 33615
813-855-4435

Eligibility Requirements: Children 5-18 years of age (abused/neglected).

Referral from Children & Family Services.

Serves Hillsborough County, Pinellas and Pasco.

Residential treatment, educational and vocational training, aftercare, foster care program, special needs adoption services, family therapy and crisis intervention, family and school support team.

Children's Home Society of Florida

Gulf Coast Division

7454 Palm River Rd. Tampa FL 33619
813-740-4266

<http://www.chsfl.org>

Infants and preschool foster care, adoption assistance and counseling services. Operates emergency shelter for neglected and abused

Serves Pinellas, Pasco, Hillsborough, Manatee, Polk, Hardee, Highland, DeSoto and Sarasota

Emergency Shelter Care (HCCS)

3110 Clay Mangum Lane Tampa, FL 33618
813-264-3807

Emergency shelter care is available for dependent, abused, or neglected children. Provides immediate protection and counseling within a caring, supportive environment.

Foster Care (CHS)

2731 13th Ave N. St. Petersburg, FL 33713

727-552-1482

Infants and preschool foster care, adoption assistance and counseling services. Operates emergency shelter for neglected and abused children.

Foster Care for Children (DCFCPS)

1313 N. Tampa St. Tampa, FL 33602

813-901-3400

Places children who have been removed from their homes by the Juvenile Court due to abuse, neglect, abandonment, or lack of supervision, with families who will provide temporary care.

Foster Home Program (Catholic Charities Diocese of St. Petersburg)

2021 E Busch Blvd. Tampa, FL 33612

813-631-4370

Recruits, trains, licenses, re-licenses and provides support and assistance to foster families in Hillsborough County.

<http://www.ccdosp.com/services/foster.html>

Medical Foster Care (CMS)

Children's Medical Services

6800 N. Dale Mabry Hwy, Suite 130

Tampa, FL 33614

813-356-1300

Program is for children with medical psychosocial problems. This is part of the Foster Care Program that deals with children between the ages of 0 - 21 years.

Professional Parenting Program

Therapeutic Foster Care Home

12512 Bruce B Downs Blvd. Tampa, FL 33612

813-977-8700

Provides services for severely, emotionally disturbed children and youth in need of residential treatment.

Protective Intervention Services

1313 N Tampa St 3rd Fl. Tampa, FL 33602

813-233-3260

Case management, assessment and placement for adult family care homes and adult living facilities; protective supervision for victims of adult abuse, neglect, or exploitation; home care for disabled adults.

Specialized Treatment Services

12512 Bruce B Downs Blvd. Tampa, FL 33612

813-977-8700

Individual, family and group therapy for victims of abuse or children in foster care. Also provides services for juvenile sex offenders.

Sunrise Therapeutic Foster Care

2206 E Henry Ave. Tampa, FL 33610

813-233-2561

Specialized therapeutic foster care services - comprehensive community and family-based treatment for foster children within the homes of specially trained foster parents.

HEAD START

SEE CHILD /DAY/ AFTER SCHOOL CARE RESOURCES

HEALTH CARE

SEE MEDICAL & DENTAL SERVICES, EMERGENCY SOCIAL SERVICES, and FINANCIAL ASSISTANCE

GROUP HOMES

SEE RESIDENTIAL PROGRAMS

HOMELESSNESS SERVICES

SEE ALSO EMERGENCY SOCIAL SERVICES, FAMILY SUPPORT SERVICES, and FINANCIAL ASSISTANCE

2-1-1/Hotline Services

One Crisis Center Plaza

202 W Bearss Ave. Tampa, FL 33613

813-234-1234

There are many programs in the county that serve people dealing with homelessness. Call the Crisis Center for referrals.

Also see the Hillsborough County ComLink web site for a lot of listings – go to this link and click on “H”, then choose Homeless from the list of topics:

<http://www.hillsboroughcounty.org/comm/comlink/home.cfm>

HOUSING

SEE ALSO FAMILY SUPPORT SERVICES and FINANCIAL ASSISTANCE

Community Improvement

9260 Bay Plaza Blvd., Suite 510 Tampa, FL 33619

813-744-5557

Assists low-income families in finding safe and decent housing. Section 8 Housing Assistance Program provides rental assistance for approved, privately owned rental units. Provides funds for homeowners to rehabilitate their dwellings. Administers several housing programs.

Housing Authority - City of Tampa

1514 Union St. Tampa, FL 33607

813-253-0551

Housing rental assistance to low income families, seniors, disabled or handicapped persons. Public housing and private rental assistance programs.

Housing Management Services

1702 N 17th Ave. Tampa, FL 33675

813-221-5116

Affordable housing program to help purchase homes and educational training in home ownership.

INFORMATION & REFERRAL

SEE ALSO Listings under specific topics for organizations that provide information & referral on services related to the topic

Brain Injury - Family & Community Support Center

11700 N 58th St Ste 0 Temple Terrace, FL 33617
813-914-9556
Statewide information and resource center, education and training, support services, awareness and prevention programs as well as legislative advocacy.

Center for Independent Living - Self Reliance, Inc.

11215 N Nebraska Ave Ste B-3 Tampa, FL 33612
813-975-6560
Counseling, advocacy, support groups, independent living skills, education and training, equipment loan and repair, information and referral, and service coordination for disabled population.

Hillsborough Information Line

601 E Kennedy Blvd 13th Fl. Tampa, FL 33602
813-272-5900
TTY: 813-301-7173
info@hillsboroughcounty.org
Comprehensive information & referral to all health and social services in the community. Automated information through the Community Link Program - publishes the Directory of Community Resources and specialized directories. Handles requests and complaints related to County Government Services.

Hispanic Services Council

MacDill-Columbus Plaza
2700 N MacDill Ave Ste 106 Tampa, FL 33607
813-876-7223
Variety of services for the Hispanic community in Hillsborough County. English as a second language classes, job referral/placement and information & Referral services.

Hotline of Hillsborough (Crisis Center)

813-234-1234
Supportive counseling, crisis intervention, information and referral services 24hrs daily, continuing education experiences, professional training, and workshops (topics relate to prevention of sexual abuse, suicide, health and family-related issues). Hotline for homeless, parenting, substance abuse, teens, suicide and rape.

West Coast District Dental Association

9720 N. Armenia Ave., Suite F Tampa, FL 33612
813-931-3018
Provides information and referrals regarding dental services and a grievance process to handle complaints concerning oral cavity care against area dentists.

LEGAL SERVICES

Bay Area Legal Services

Riverbrook Professional Center
829 W. Dr. MLK Jr. Blvd., 2nd Fl. Tampa, FL 33603
813-232-1343

<http://www.bals.org/main/index.htm>

Free counseling and representation to eligible clients for civil legal problems including the following areas: family Law, housing, public benefits, and consumer law. Call for location nearest you.

Child Support Enforcement

6302 E. MLK Blvd., Suite 110 Tampa, FL 33619
800-622-KIDS (5437)
<http://www.myflorida.com/dor/childsupport/>
Locates non-supporting parents, establishes paternity and/or a court order for support, enforces court orders, and assists families with medical support enforcement. Services are free for families who are receiving Temporary Assistance to Needy Families or Medicaid; a \$25 initial application fee is required for all others.

Consumer Protection Agency

8900 N Armenia Ave Ste 226 Tampa, FL 33604-1067
813-903-3430
Enforces consumer protection laws by investigating and resolving complaints

Guardian Ad Litem

Hillsborough County Courthouse South Annex
801 E. Kennedy Blvd. Room 206 Tampa, FL 33602
813-272-5110
Represents the best interests of abused, abandoned or neglected children who become involved in court proceedings throughout their involvement with the legal system. As a party to the proceedings, volunteers offer an unbiased voice in advocating for what is the child's best interest.

Law Library – Hillsborough County

501 E Kennedy Blvd Ste 100 Tampa, FL 33602
813-272-5818
Provides legal research material not generally obtainable elsewhere in the county for use by the Bench, Bar, students and the general public. Materials must be used in the library.

Lawyer Referral Service

101 E Kennedy Blvd 2110 Tampa, FL 33602
813-221-7780
Provides access to local attorneys via referral for consultation.

Mediation & Diversion Services

Hillsborough County Courthouse
419 Pierce St., Room 230 Tampa, FL 33602
813-272-5642
Trained mediators work with parties involved in disputes to help them reach a mutually acceptable resolution.

Victim's Assistance Program

700 E Twiggs St Rm 711 Tampa, FL 33602
813-272-6472

Provides comprehensive services to victims of violent crime.

MEDICAL & DENTAL SERVICES
(SEE ALSO EMERGENCY SOCIAL
SERVICES, FINANCIAL ASSISTANCE,
INFORMATION & REFERRAL)

Dental Research Clinic

2010 E Hillsborough Ave. Tampa, FL 33610
813-238-7725

Provides routine dental care and treatment, including preventive treatment, for public assistance clients and the plan is subject to co-payments.

Dover Health Center

14618 SR 574 Dover, FL 33527
813-349-7700

Healthcare for people who need, but can't afford, basic medical services

Health & Social Services

County Center 601 E. Kennedy Blvd. , 25th Floor
Tampa, FL 33602
813-272-5040

Shelter, food, clothing, outpatient/inpatient care, boarding home services, burial/cremation, transportation, and dental services for qualifying low-income residents. Additional services include case management services, operation of Neighborhood Service Centers, the summer food program, assistance to veterans, consumer protection services, and child care licensing. KidCare Outreach

Health Center Dental Clinic**Tampa**

3402 N 22nd St. Tampa, FL 33605
813-272-6240

Provides dental services, exams, cleaning, extractions and fillings.

North Tampa

1229 E 131st Ave. Tampa, FL 33612
813-886-0950

Provider for most Medicaid HMO's, Medicaid, Medicare, Hillsborough County Health Care Plan, Self-pay. Provides adult medicine, pediatrics, ob/prenatal, school physical, immunizations, family planning. Social worker on site.

Hillsborough Health Care

County Center 601 E. Kennedy Blvd. , 25th Floor
Tampa, FL 33601
813-272-5555

If you are a resident of Hillsborough County, over 18 years of age, meet income guidelines, and do not qualify for Medicaid you may be eligible to become

part of the Hillsborough Healthcare Plan and receive free health care services..

Ask-A-Nurse

813-870-4444

The line is staffed 24 hours a day by nurses who advise about medical problems and/or if a doctor should be seen.

Children's Medical Services

6800 N. Dale Mabry, Suite 130 Tampa, FL 33614
813-356-1300

Tampa Referral Center

17 Davis Blvd., Suite 407
Tampa, FL 33606

813-272-2761

<http://www.cms-kids.com/>

For children with special health care needs. Medical care is provided by specially qualified doctors, hospitals and other providers who work together to provide the highest quality pediatric care.

Florida KidCare (HCHSS)

County Center 601 E. Kennedy Blvd., 24th floor
Tampa, FL 33601-1110

813-272-5285
888-540-5437

Provides affordable health insurance to Hillsborough County's uninsured children 0-18 years of age. Florida KidCare works like traditional health insurance and offers a full range of medical services including well-child check ups, prescription drugs, referral to specialists, lab tests, hospital care, and more

Hillsborough County Public Health Department

1105 E. Kennedy Blvd. Tampa, FL 33602
813-307-8000

Provides a variety of health services within the geographical area of Hillsborough County. Call for neighborhood location nearest you.

Judeo Christian Health Clinic

41201/2 North MacDill Ave. Tampa, FL 33607
813-870-0395

Fax 813-879-3149

Provides limited dental treatment services covering simple extractions only (no wisdom teeth and oral surgery). Provides health services - no routine or school physicals provided. Free eye exams, charges for glasses vary from \$28 to \$33.

Medicaid

SEE under FINANCIAL ASSISTANCE

Peter Davis Health Center

1401 E. 22nd Ave. Tampa, FL 33605
813-248-0182

Provider for most Medicaid HMO's, Medipass, medicaid, Medicare, Hillsborough County Health Plan, and others. Services are: adult medicine, pediatrics, OB services. Social workers available; school physicals, immunizations, family planning.

Plant City Family Care

508 N. Maryland Ave. Plant City, FL 33566
813-349-7600

Provides healthcare for people who need, but can't afford basic medical services. Services include: children's health, family health, obstetrics/GYN, infectious disease care; family planning, immunizations, dental services, pharmacy, lab, health education.

Sine Domus Health Center

920 N Governor St. Tampa, FL 33602
813-227-9227
Zip codes 33601, 33602, 33605, 33606, 33607, 33608, 33609, 33611, 33616, 33619 north of Hwy 60, 33621, 33629

A provider for most Medicaid HMO's, Medipass, medicaid, Medicare, Hillsborough County Health Plan, and self pay. Services include: adult medicine, pediatrics, OB services. Social Workers are available for counseling; school physicals, immunizations, family planning

Suncoast Community Health Centers, Inc.

Ruskin Health Center
2814 14th Ave SE Ruskin, FL 33570
813-349-7800

Health care for people who need, but can't afford, basic medical services.

MENTAL HEALTH SERVICES & SUPPORTS (including COUNSELING)**Baylife Acute Care Center**

Adult Inpatient-Emergency & Acute
2212 E Henry Ave. Tampa, FL 33610
813-272-3249
18 years of age or over, meet Baker Act requirements (threat to self/others), problem must be due to mental illness.

Baylife Center Adult Day Treatment

2313 Violet St. Tampa, FL 33603
813-673-4622
Must have history of hospitalization and psychiatric disorder, not a danger to self or others. Referrals are accepted from a number of departments and agencies in and out of Mental Health Center.

Catholic Charities Diocese of St. Petersburg

2021 E Busch Blvd. Tampa, FL 33612
813-631-4370
<http://www.ccdosp.com/services/family.html>
Assists families in accessing needed community services such as child care, health care, employment and financial assistance and other social services. Staff work individually with parents to enhance parenting skills, deal with difficult behaviors and improve family problem solving abilities. Home visitation is available to improve accessibility to program services.

Children's Crisis & Stabilization Services

Mental Health Care, Inc.
2212 East Henry Ave. Tampa, Florida 33610
813-272-2882
For children 5-17 years of age, medically cleared, who meet diagnostic criteria for mental illness under Baker Act. Offers three services: Emergency Walk In (EWI), Children's Crisis Stabilization Unit (CCSU) and Intensive Day Treatment Program (IDTP). Provides screening, evaluation, intervention and referral services to children and adolescents experiencing severe emotional/behavioral disturbance or acute psychiatric problems. Psychiatric evaluation and psychotropic medication; individual, family and group therapy; activities therapy and educational services are provided. The IDT program offers partial hospitalization services to help transition CCSU clients back into the community, or as an alternative to CCSU admission for children in crisis who have sufficient family support to maintain them at home while they receive daily intensive psychiatric services.

Community Counseling Services

7520 W. Waters Ave., Suite 18 Tampa, FL 33615
813-884-6466
Family counseling in office or in-home for families of children through age 18.

Children's Community Services Division-FASST

4210 Bay Villa Tampa, FL 33611
813-272-2244
Provides case management and early intervention to children with significant mental health needs to allow the child to remain at home or in the community.

Family Service Association of Greater Tampa**Tampa**

5800 N Nebraska Ave. Tampa, FL 33604
813-238-3727

Brandon

407 N Parsons Ste 104A Brandon, FL 33510
813-238-3727

Comprehensive professional marriage, family, individual and group counseling, groups for teenagers, counseling services for domestic violence and trauma victims, treatment programs for children who have witnessed domestic violence, programs for behaviorally challenged children, family life education and a speakers bureau.

Federation of Families For Children's Mental Health Tampa

Hillsborough County FFCMH
13301 Bruce B. Downs Blvd., FMHI Box 2, Rm. 2514
Tampa, FL 33612
813-974-7930

<http://www.federationoffamilies.org>

A local chapter of a national parent-run organization focused on the needs of children and youth with emotional, behavioral or mental disorders and their families.

Henry Street Academy – Mental Health Care

2208 E. Henry Ave. Tampa, FL 33610

813-272-2244

Children 11 - 21 - referred by schools. Provides a therapeutic education environment, ongoing diagnostic service for families with children with emotional and/or behavioral problems. Program emphasizes and utilizes a mental health and school team approach in the identification, evaluation and remediation of Emotionally Handicapped (EH) and Severely Emotionally Disturbed (SED) students.

Hillsborough County Dept. of Children's Services

3110 Clay Mangum Ln. Tampa, FL 33618

813-264-3821

Residential and non-residential services for children and parents. Day treatment and residential care services designed to modify the behavior of emotionally dysfunctional children. Counseling services to reunite families and prevent runaway behavior, as well as short-term residential respite and shelter. Emergency shelter care is available for dependent, abused or neglected children. Parenting skills classes.

Intensive Case Management

12512 Bruce B Downs Blvd. Tampa, FL 33612

813-977-8700

Provides mental health services for children and youth with severe emotional disturbance. Referral through Case Review Committee of DCF.

Mental Health Care, Inc.

2212 East Henry Ave. Tampa, Florida

Adults: 813-272-2958

Youths: 813-272-2882

Comprehensive community mental health center providing crisis intervention, residential inpatient and outpatient services to individuals and families, and 24-hour phone access to mental health professionals. Special target populations include children, elderly, the homeless, and persons in jail with mental illness.

Mental Health Department

419 Pierce St Rm 279 Tampa, FL 33602

813-276-8100

Maintains the records on involuntary procedures related to mental illness, drug abuse, developmentally disabled, tuberculosis, acquired immune deficiency syndrome, adjudication of incapacitated persons, restoration of capacity for persons having previously been declared incapacitated, preneed guardians, and return of personal property.

NAMI Hillsborough (support and advocacy for mental illness)

NAMI Hillsborough

11405 Orilla Del Rio Place Temple Terrace, FL 33617

813-989-2410

Local chapter of a national support group on mental illness.

State site: <http://www.nami.org>

Northside Mental Health Center

12512 Bruce B. Downs Blvd. Tampa, FL 33612

813-977-8700

<http://www.northsidemh.org/home/>

A nonprofit community mental health center that has provided care to individuals in the community since 1976. Outpatient Counseling Services, Community Support Center. Outpatient services for adults with chronic/severe mental health problems:

1109 East 139th Ave. Tampa, Florida

(813) 972-2289

Panos Center – Managed Care

1403 W. Reynolds St. Plant City, FL 33566

813-684-0726 or 813-752-2751

Individual, family, group therapy, medication review, collateral therapy.

Positive Behavior Change Project

University of South Florida

Louis de la Parte Florida Mental Health Institute

Department of Child and Family Studies

Division of Applied Research and Educational

Supports

Web site under construction

Call 813-974-4612 and ask to speak with someone about this project. The mission of the project is to provide a research-oriented provision of behavior support to children who have been abused and/or neglected. Six teams of behavior analysts will provide behavior assessments, design interventions and teach positive behavior change skills to caregivers. A primary goal of the PBC project is to provide children with a stable, nurturing environment that promotes learning.

Project EVE - End Violence Early

2206 E Henry Ave. Tampa, FL 33610

813-233-2561

Immediate clinical services to children 10-15 years of age who have been arrested on a charge of domestic violence. Case staffing with multi-disciplinary team, intensive case management, individual and family therapy, etc.

SED Outreach Treatment**Tampa**

Children's Community Services Division

5707 N. 22nd St. Tampa, FL 33610

813-272-2244

Plant City

5005 S Turkey Creek Rd.

Plant City, FL 33567

813-757-9270

Provides students in SED programs with mental health therapy support services. Treatment services to students located on school campuses throughout the school district. Referrals for admissions processed & approved by the Hillsborough County Public School Special Services Team.

Specialized Treatment Services

Northside Mental Health Center
12512 Bruce B. Downs Blvd. Tampa, FL 33612
813-977-8700

<http://www.northsidemh.org/home/>

Provides psychotherapy to children who have been victims of abuse.

Tampa Bay Depressive and Manic Depressive Association (TBDMDA)

P.O. Box 340572 Tampa, FL 33694
813-878-2906

<http://www.tbdmda.org>

A nonprofit organization for both individuals who have been diagnosed as having an affective disorder and the families and friends of these individuals. Affective disorders include depression, bipolar (manic depression), situational depression, anxiety, dual diagnosis, and other related illnesses. Meetings in Hillsborough, Pasco & Pinellas. Call or visit web site for times & locations.

Tampa Counseling Center

1060 W. Busch Blvd. Tampa, FL 33612
813-631-4370

Individual, family, group and marriage counseling, psychoeducational groups including parenting skills and coping skills, and parenting classes which include Active Parenting Today (for parents of children 2-12 years of age), and Parenting of Teens (for parents of young adolescents).

Tampa Jewish Family Services

13009 Community Campus Dr. Tampa, FL 33625
813-960-1848

<http://www.tjfs.org/>

Provides confidential services to all Hillsborough County residents. Some insurance plans are accepted and this, combined with our sliding fee scale makes these specialized services available to all.

Therapeutic Early Childhood Program

5707 22nd St. Tampa, FL 33610
813-272-3376

Therapeutic services in conjunction with the school system. Emphasizes mental health and school team approach in the identification, evaluation and remediation of EH/SED students. Group therapy, family therapy, collateral services, activity support groups, crisis intervention, case management and consultation with school staff is provided as needed. Outreach treatment services for children and families in East Hillsborough County, South Tampa, and Town-N-Country. Referrals/admissions are processed & approved by the HC Public School Special Services Team.

THINK Tampa Hillsborough Integrated Network for Kids

1205 E. 8th Avenue Tampa, FL 33605
813-229-2884

<http://www.childrensboard.org/familyresourcethink.html>

THINK is a federally funded initiative (one of 67 national sites) that will improve community-based services in Hillsborough County for children with serious emotional disorders and their families.

SERVICES:

Project Relief: Respite services for families and caregivers of children with SED

Hillsborough County Youth Advocate Program:

Provides non-traditional community-based advocacy services to "cross system" teens with SED.

United Cerebral Palsy of Tampa Bay, Inc.

2215 E Henry Ave. Tampa, FL 33610
813-239-1179

<http://www.ucptampa.org/>

Inclusive, developmental pre-school and childcare, physical, occupational and speech therapies, family support, respite, employment and training program, toy lending library, SIBshops and the Totmobile.

MIGRANT SERVICES**Beth El Child Development Center**

18240A HWY 301 Wimauma, FL
813-672-5165

Provides childcare for children (0-5 years old) of migrant families. Services include family support, health and dental screening & nutrition. South county.

Catholic Charities - Diocese of St Petersburg, Inc.

2021 E Busch Blvd. Tampa, FL 33612
813-631-4370

Farmworker housing

Hispanic Services Council

MacDill-Columbus Plaza
2700 N MacDill Ave Ste 106 Tampa, FL 33607
813-876-7223

English as a second language classes, job referral/placement and information & Referral services.

RCMA Redlands Christian Migrant Association

The Rollason Center 402 W Main St.
Immokalee, FL 34142-3933
941-658-3560

Ruskin & Wimauma

416 Hwy 41 S. Ruskin, FL 33570
813-671-5264

Non-profit, non-sectarian voluntary organization. Provides developmentally appropriate childcare, family support, outreach and drop out prevention services to migrant and seasonal farmworkers throughout the rural areas of the State of Florida.

St. Anne Catholic Church

106 11th Ave NE, Ruskin, FL 33570

813-645-1714

Food pantry program geared toward families in need of food assistance, homeless and migrant workers in Ruskin area.

PARENTING RESOURCES

(SEE ALSO FAMILY SUPPORT SERVICES AND MENTAL HEALTH SERVICES & SUPPORTS)

Child Abuse Council – SEE listing under ABUSE – PREVENTION & REPORTING for parenting programs

FOCUS (Friends Offering Children Unlimited Success)

3020 W. Laurel St. Tampa, FL 33607

813-875-5771

<http://www.focusparenting.com>

Call to receive a copy of the FOCUS Guide to Parenting Services and Community Resources

Hillsborough County COMLINK

Go to this page:

<http://www.hillsboroughcounty.org/comm/comlink/home.cfm>

Then choose “P” from the alphabet, then choose “Parenting Skills” from the list of topics for lots of resources on this subject.

Positive Parenting

Joyce Strickland, Owner & Director

1102 Desoto Rd. Riverview, FL 33569

813-677-3556

Specializes in behavioral interventions for at-risk and children with special needs. Behavioral management classes, behavioral assessments, in-home behavior management training sessions, case management services, child and parent advocacy, developmental early intervention services.

Systematic Training for Effective Parenting – STEP

3110 Clay Mangum Ln. Tampa, FL 33618

813-264-3807

Enhances communication between parents and children and teaches positive discipline method. Support group to improve parenting skills. Applies to parents of children of all ages.

University Psychotherapy Group

12210 N. 56th St. Tampa, FL 33617

813-980-3488

Individual counseling for grief/trauma resolution and other issues, clinical consultation, Active Parenting classes. Parenting classes.

RESIDENTIAL PROGRAMS

(SEE ALSO FOSTER CARE AND MENTAL HEALTH SERVICES & SUPPORTS FOR MANY OTHER RESIDENTIAL PROGRAMS.)

NOTE: Individuals with developmental disabilities receive referral from the Department of Children and Families/ Developmental Disabilities Program (813-558-5540), which keeps a current list of facilities.

Angels Unaware, Inc.

4918 W Linebaugh Ave. Tampa, FL 33688-0040

813-961-1159

Administrative office for 7 group homes for Adults/teens 13 years of age or older with developmental disabilities.

Children's Home, Inc.

10909 Memorial Highway Tampa, FL 33615

813-855-4435

<http://www.thechildrenshomeinc.com>

Residential treatment to abused and neglected children.

Children's Services, Hillsborough County

3110 Clay Mangum Ln. Tampa, FL 33618

813-264-3821

Residential and non-residential services for children and parents. Day treatment and residential care services designed to modify the behavior of emotionally dysfunctional children. Counseling services to reunite families and prevent runaway behavior. Emergency shelter care is available for dependent, abused or neglected children. Also, there are training classes for parents to improve parenting skills.

Emergency & Acute Care Residential Treatment Program

2212 E Henry Ave. Tampa, FL 33610

813-272-2958

A 17-bed, locked, inpatient program. Designed to teach and promote individual responsibility for persons with serious and chronic mental illness, with the intention of preventing future crisis stabilization or longer-term state facility hospitalizations. Referral from inpatient psychiatric facility.

Juvenile Addictions Recovery Facility

8620 N Dixon Ave. Tampa, FL 33604

813-931-4669

A 24-hour secure substance abuse receiving facility providing emergency assessment, detoxification, stabilization and short term (1-5 days) residential treatment services for twenty (20) male/female adolescents 12-17 years of age. Assessment and referrals are provided by physicians, nurses, recreation therapists, case managers and direct care workers.

Residential Services

2714 W Kirby St. Tampa, FL 33614

813-931-9100

Operates five group residential group homes for 37 men, women, and children with developmental disabilities. Program provides 24-hour staff supervision.

Youth Residential Program – ACTS

11309 Tom Folsom Rd Thonotassassa, FL 33592

813-986-5966

Provides services to adolescents, male/female, (20 beds) who have abused alcohol/other drugs. Hosts an alternative school with teachers provided by the Hillsborough County School Board. Residential services include long-term treatment usually three to twelve months, based on an individual's need.

RESPIRE**THINK Tampa Hillsborough Integrated Network for Kids**

1205 E. 8th Avenue Tampa, FL 33605

813-229-2884

Respite services for families and caregivers of children with SED. (see full details of THINK project under Mental Health Services & Supports in this section)

United Cerebral Palsy of Tampa Bay, Inc.

2215 E Henry Ave Tampa, FL 33610

813-239-1179

<http://www.ucptampa.org/>

Respite services for families of individuals with developmental disabilities.

SCHOOLS**School District of Hillsborough County**

<http://www.sdhc.k12.fl.us/>

901 East Kennedy Boulevard Tampa, Florida 33602

813-272-4000

Information packet:

<http://apps.sdhc.k12.fl.us/public/mainindex/information/>

Citizen's Information Call Center:

information.center@sdhc.k12.fl.us

or phone 813-272-4974

District areas:

<http://www.sdhc.k12.fl.us/~ese.dept/#district>

Exceptional Education Division

<http://www.sdhc.k12.fl.us/~ese.dept/>

Velasco Student Services Center

1202 Palm Avenue Tampa, Florida 33605

District Areas – administration offices:

<http://apps.sdhc.k12.fl.us/sdhc2/schoolsite/areas.htm>

Family and School Support Teams (FASST2)

School-age project:

Northside Mental Health Center

12512 Bruce B. Downs Blvd. Tampa, FL 33612

813-977-8700 ext. 245

Information, referral, in-home or in-office child and family therapy, tutoring, school-based support and intervention.

FDLRS Parent Services (Parent Liaisons)

4210 West Bay Villa Avenue

Tampa, Florida 33611-1206

813-837-7777

http://www.sdhc.k12.fl.us/~fdlrs/parent_services.htm

Provides information about ESE (Exceptional Student Education) programs and services, provides guidance on educational planning, assists families in finding community resources.

Sylvia Kimbell Full Service School Parent Resource Center

2100 E. 26th Ave. Tampa, FL 33605

813-272-0673

Referrals for tutoring, school liaison services, parent education, truancy prevention, summer youth employment counselor.

TRANSPORTATION**(SEE ALSO EMERGENCY SOCIAL SERVICES)****HARTLINE Bus Service****Hillsborough Area Regional Transit Authority**

4305 E. 21st Ave. Tampa, FL 33605

813-623-5835

Route Information: 813-254-4278

TTD: 813-626-9158

Paratransit

4305 E 21st Ave Tampa, FL 33605

813-623-5835

Provides the eligible persons with disabilities, who are prevented from using HART's regular bus system, with the necessary transportation to get to his/her appointments, jobs, social engagements or doctor's office.

School Transportation

813-982-5500

ESE Transportation (Related Services): 813-982-5528

Transportation for students attending Hillsborough County schools.

Self-Reliance (Persons with disabilities)

813-975-6560

(see details under DISABILITIES)

Share-a-Van

813-272-5126

Hillsborough County transportation provider serving persons 60 years of age or older, low-income citizens, and eligible handicapped residents. Arrangements for transportation should be made two to three working days in advance. No fees are charged.

Specialized Transportation/ Sunshine Line

4023 Armenia Ave., Suite 300, Tampa, FL 33607

813-272-7272

TDD: 813-276-2628

Door-to-door transportation and bus passes for elderly, low-income & disabled persons, including Medicaid and Hillsborough Health Care clients, who do not have or cannot afford their own transportation.

For reservations, call 813-272-7272, Monday through Friday, 8 a.m. until 5 p.m. Fees are required for services based upon funding source.

TransCare

One Crisis Center Plaza 202 W Bearss Ave

Tampa, FL 33613

813-964-1964

<http://www.crisiscenter.com/btrans.htm>

Emergency transportation for medical and/or mental health patients including Baker Act clients. Service is initiated by law enforcement, medical or mental health facilities and/or professionals.

HELPFUL STATE RESOURCES FOR FLORIDA FAMILIES OF CHILDREN WITH BEHAVIORAL AND/OR EMOTIONAL ISSUES

Many of these organizations have web sites. If you do not have access to a computer at home, ask your child's teacher if your school has a computer families can use to log on to the internet or visit your local public library for free internet access. Most libraries limit users to 30 minutes at a time.

Abuse Hotline

Department of Children and Families

http://www5.myflorida.com/cf_web/myflorida2/health/human/childabuse/

Statewide Abuse Hotline: 800-962-2873

Hotline counselors answer calls related to child and adult abuse, neglect and exploitation to determine whether an investigation should be initiated.

Advocacy Center for Persons with Disabilities

<http://www.advocacycenter.org>

2671 Executive Center Circle West Webster Bldg.,
Suite 100 Tallahassee, FL 32301-5092
800-342-0823 or 850-488-9071

State Protection and Advocacy Agency
Protection and Advocacy for Individuals with Mental Illness (part of the Advocacy Center)

The PAIMI program was established to protect the statutory and constitutional rights of persons diagnosed as having significant mental illness and who are in treatment facilities and/or residential programs, or people who have a problem that arose within 90 days of discharge from a residential facility. PAIMI is authorized to investigate incidents of abuse and neglect or persons with mental illness and to pursue administrative, legal and other remedies to ensure their protection.

Department of Health, Division of Medical Quality Assurance

http://www.doh.state.fl.us/mqa/enforcement/enforce_home.htm

888-419-3456

As of July 1, 2001 assumed responsibility of analysis of complaints and reports involving potential misconduct of a licensee and initiates investigations when appropriate. Previously this was performed by the Agency for Health Care Administration.

Complaint forms available at above web site or call the 888 number to have a copy mailed to you.

Complaints with incidents occurring on or after July 1, 2001 must be filed within 6 years of the occurrence of the incident. In cases where it can be shown that fraud, concealment or intentional misrepresentation of facts prevented the discovery of the alleged violation, the time limit is extended to 12 years of the occurrence of the incident. These time limits do not apply to

complaints involving criminal actions, diversion of controlled substances, sexual misconduct, or impairment by a licensee. Additionally, patient records may be destroyed according to time limits (generally after 5 years) provided by Florida Administrative Code.

Autism Society of Florida

PO Box 970646 Coconut Creek, FL 33097
954-349-2820

<http://host45.ipowerweb.com/~autismfl/>

Center for Autism and Related Disabilities (CARD)

University of South Florida
Louis de la Parte Mental Health Institute
Department of Child & Family Studies
13301 Bruce B. Downs Blvd.
Tampa, FL 33612-3899
813-974-2532 or 800-333-4530
<http://card-usf.fmhi.usf.edu>

Clearinghouse on Disability Information

4040 Esplanade Way, Suite 180
Tallahassee, FL 32399-7016
Toll Free: 877-232-4968 Voice/TTY
A program of the Governor's ADA Working Group
Call for a listing of disability resources in your area.

Department of Children and Families

http://www5.myflorida.com/cf_web/myflorida2/dcfcontacts.html

1317 Winewood Blvd. Building 1, Room 202
Tallahassee, Florida 32399-0700
850-487-1111

Developmental Disabilities 850-488-4257

Mental Health 850-488-8304

Substance Abuse 850-487-2920

Web site is for a directory of District/Region Offices

Family Care Councils of Florida

State Chairperson: Patty Houghland

7070 North Blue Angel Parkway

Pensacola, FL 32526

850-944-3217 (home)

Email: pattyhoughland@cox.net

<http://www.fccflorida.org>

FCCs assist in providing information and outreach to families, review the effectiveness of the Developmental Disabilities Program and make recommendations with respect to implementation, advise the Developmental Disabilities Program administrators on the community and family support systems in their area, and meet and share information. See web site for map of local councils.

Family Network On Disabilities Of Florida

2735 Whitney Road, Clearwater, FL 33760-1610

800-825-5736 or 727-523-1130

<http://fndfl.org>

A statewide alliance of individuals with disabilities, special needs, or at-risk and their families. Provides family-driven support, education, information, and advocacy.

Fetal Alcohol Syndrome

<http://www.mofas.org/fasdirect/Florida.htm>

Visit this site for a list of Florida contacts and resources for FAS.

Florida Department of Education

<http://www.firn.edu/doe/doehome.htm>

Within the Dept. of Education:

Bureau of Instructional Support and Community

<http://www.firn.edu/doe/bin00014/home0014.htm>

614 Turlington Building, 325 West Gaines Street,
Tallahassee, Florida 32399
850-488-1570

Clearinghouse Information Center

850-488-1879

<http://www.firn.edu/doe/bin00014/clerhome.htm>

Provides materials about people with exceptionalities, exceptional student education, school improvement, student outcomes, coordinated school health, parent and professional partnerships, and many other topics.

Exceptional Student Education Services

<http://www.firn.edu/doe/bin00014/ese-home.htm>

The Bureau of Instructional Support and Community Services supports school districts and others in their efforts to provide exceptional student education programs for students ages 3 through 21 who have disabilities or who are gifted.

Florida Diagnostic and Learning Resources System (FDLRS)

<http://fdlrs.brevard.k12.fl.us/fdlrs/index.html>

Bureau of Instructional Support and Community Svcs
Division of Public Schools and Community Education

Florida Department of Education

614 Turlington Building

Tallahassee, Florida 32399-0400

850-488-1106

Provides diagnostic and instructional support services to district exceptional student education programs and families of students with exceptionalities. FDLRS is comprised of nineteen Associate Centers - <http://fdlrs.brevard.k12.fl.us/fdlrs/AC.html> and four Specialized Centers - <http://fdlrs.brevard.k12.fl.us/fdlrs/SpecCent.html> that serve specific student populations.

For further information, please contact your nearest center, or the state office.

Florida Division of Vocational Rehabilitation Services

<http://www.rehabworks.org>

Dept. of Education

2002 Old St. Augustine Rd, Bldg. A

Tallahassee, FL 32301-4862

800-451-4327 or 850-488-6210

A state agency to help people with disabilities obtain employment and increase their independence.

Florida Partnership for Family Involvement in Education

A Project of FND of Florida

<http://fndfl.org/partnership/>

2735 Whitney Road

Clearwater, FL 33760

800-825-5736 or 727-523-1130

Email: partnership@fndfl.org

Promotes family involvement in education to enhance student achievement.

Florida's Positive Behavior Support Project

DARES/CFS/FMHI MHC2113A USF

13301 Bruce B. Downs Blvd.

Tampa, FL 33612-3899

813-974-6440

<http://flpbs.fmhi.usf.edu/>

Purpose: To increase the capacity of Florida's educators, families and support organizations to address challenging behaviors using positive behavior support technology.

Learning Disabilities Association of Florida

A nonprofit organization of parents, professionals, and adults with LD devoted to defining and finding solutions to the broad spectrum of learning issues. LDA-FL is affiliated with the Learning Disabilities Association of America. When this directory was created (April 2003), the state web site was not available. Please contact the national office for information on Florida's chapter: 4156 Library Road
Pittsburgh, PA 15234-1349
412-341-1515

<http://www.ldanatl.org>

NAMI Florida (support and advocacy for mental illness)

<http://www.namifl.org>

1020 E. Lafayette Street Ste. 106-A

Tallahassee, FL 32301

850-671-4445 Toll-free help line: 877-626-4352 x23

Florida chapter of National Alliance for the Mentally Ill - a nonprofit, grassroots, self-help, support and advocacy organization of consumers, families, and friends of people with severe mental illnesses.

NICHCY - National Information Center for Children and Youth with Disabilities – see

details in the Helpful National Resources section of this manual. State of Florida resources are available for download or printing here:

<http://www.nichcy.org/stateshe/fl.htm>

Research and Training Center for Children's Mental Health

<http://rtckids.fmhi.usf.edu>

Louis De La Parte Florida Mental Health Institute

University of South Florida

13301 Bruce B. Downs Blvd.

Tampa, FL 33612-3807

813-974-4661

Conducts research studies on the prevention and intervention of serious emotional disturbances in children and the systems of care for children and adolescents. Provides training for professionals working with children and families and publish numerous articles on children's mental health and service system issues.

HELPFUL NATIONAL RESOURCES FOR FAMILIES OF CHILDREN WITH BEHAVIORAL AND/OR EMOTIONAL ISSUES

Many of these organizations have web sites. If you do not have access to a computer at home, ask your child's teacher if your school has a computer families can use to log on to the internet or visit your local public library for free internet access. Most libraries limit users to 30 minutes at a time.

About Our Kids

<http://www.aboutourkids.com>

New York University Child Study Center
577 First Avenue New York, NY 10016
212-263-6622

Extensive online source of information on all aspects of parenting, children's mental health, and family issues.

A.D.D. WareHouse

<http://addwarehouse.com>

300 Northwest 70th Avenue, Suite 102
Plantation, FL 33317
800-233-9273 or 954-792-8100
Email: sales@addwarehouse.com

The ADD Warehouse distributes books, videos and training materials on ADD for parents, teachers, health care providers, and children. A free catalogue is available.

Adolescence Directory On-Line (ADOL)

Center for Adolescent and Family Studies
School of Education, Indiana University Bloomington
<http://education.indiana.edu/cas/adol/adol.html>

An electronic guide to information on adolescent issues. It is a service of the Center for Adolescent Studies at Indiana University. Educators, counselors, parents, researchers, health practitioners, and teens can use ADOL to find Web resources on various mental health issues related to adolescence.

American Academy of Child & Adolescent Psychiatry

3615 Wisconsin Ave. NW Washington, DC 20016
202-966-7300

http://www.aacap.org/info_families/index.htm

Lots of information on web site – see link to Facts for Families and other resources

APA Online (American Psychological Association)

750 First Street, NE Washington, DC 20002-4242
800-374-2721 or 202-336-5500

<http://www.apa.org/psychnet/>

Many fact sheets on various topics on web site.

For a referral to a psychologist in your area call 1-800-964-2000. The operator will use your zip code to locate and connect you with the referral system in your area.

ARCH National Respite Network and Resource Center

<http://www.chedp.com/archbroc.htm>

Chapel Hill Training-Outreach Project
800 Eastowne Dr., Suite 105, Chapel Hill, NC 27514
800-473-1717, ext. 222

The ARCH National Respite Network provides a variety of informational resources to the general public:

- National Respite Locator Service
- lending library of relevant books, journals, and audiovisual materials
- website with downloadable fact sheets on respite

Autism Society of America (ASA)

<http://www.autism-society.org>

7910 Woodmont Ave., Suite 300 Bethesda, MD 20814
301-657-0881 or 1-800-3-AUTISM
Education, advocacy at state and federal levels, active public awareness and the promotion of research form the cornerstones of ASA's efforts.

Center for Early Education and Development

<http://education.umn.edu/ceed/>

University of Minnesota
215 Pattee Hall, 150 Pillsbury Dr. SE
Minneapolis, MN 55455
612-625-2898

Provides information regarding young children (birth to age eight), including children with special needs, in the areas of education, child care, child development, and family education.

Web site contains information about CEED activities, including research, training, and publications geared toward improving professional practices, supporting parents, and informing policy development.

Center for Evidence-Based Practice: Young Children with Challenging Behavior

Department of Child and Family Studies, MHC 2113A
Louis de la Parte Florida Mental Health Institute
University of South Florida
13301 Bruce B. Downs Blvd.
Tampa, FL 33612-3807
Phone: 813-974-6100
Fax: 813-974-6115

<http://www.challengingbehavior.org>

The Center is funded by the U.S. Department of Education, Office of Special Education Programs, to raise the awareness and implementation of positive, evidence-based practices, and to build an enhanced and more accessible database to support those practices.

Center for Mental Health Services, a Service of Substance Abuse and Mental Health Services Administration

5600 Fishers Lane Room 17-99
Rockville, MD 20857

<http://www.mentalhealth.org>

Supports programs for populations who are at-risk for mental illnesses and lack mental health services including women, minorities, older adults, rural Americans, persons in the criminal justice system, and refugees. Programs focus on prevention, early intervention, and treatment services; special and emerging mental health issues, such as workplace, domestic, and school violence; the role of the faith community; services that meet cultural needs; and the mental health needs of refugees and torture survivors.

Center on the Social and Emotional Foundations for Early Learning

University of Illinois at Urbana-Champaign
Children's Research Center
51 Gerty Drive Champaign, IL 61820
217- 333-1386 or 800- 583-4135
Fax: 217- 333-3767

<http://csefel.uiuc.edu>

A national center focused on strengthening the capacity of child care and Head Start programs to improve the social and emotional outcomes of young children.

Children and Adults with Attention Deficit Disorder (CHADD)

<http://chadd.org/>

8181 Professional Place, Suite 201
Landover, MD 20785
800-233-4050 or 301-306-7070

CH.A.D.D. works to ensure that those with ADD reach their inherent potential. Local chapters hold regular meetings providing support and information.

Council for Exceptional Children

<http://www.cec.sped.org/>

1110 North Glebe Road, Suite 300,
Arlington, VA 22201-5704

703-620-3660 TTY (text only): 703-264-9446

Services include Special education publications, information services such as the ERIC Clearinghouse, the National Clearinghouse on Careers Serving Children with Disabilities, and the IDEA Partnerships, in cooperation with the U.S. Department of Education.

Child's Work/Child's Play

<http://www.childswork.com/>

135 Dupont Street P. O. Box 760
Plainview, New York 11803-0760
800-962-1141 or 516-349-5520

Information & products addressing the social and emotional needs of children and adolescents.

Discipline Procedures online resource

<http://www.ideapractices.org/law/briefs/brief05.php>

IDEA Practices online <http://www.ideapractices.org/> resources from the IDEA Partnerships (four national projects funded by the U.S. Department of Education's Office of Special Education and Rehabilitative Services to deliver a common message about the 1997 reauthorization of the Individuals with Disabilities Education Act).

ERIC (Educational Resources Information Center) Clearinghouse on Disabilities and Gifted Education

<http://ericec.org/digests/prodfly.html>

1920 Association Dr. Reston, VA 22091-1589
800-328-0272 or 703-264-9474

ERIC Digests are good sources of information for parents on a wide variety of topics. Some are available in Spanish.

Federation of Families for Children's Mental Health FFCMH

<http://www.ffcmh.org/>

1101 King St., Suite 420
Alexandria, VA 22314
703-684-7710

FCMH provides information, support, and referrals through federation chapters throughout the country. Focuses on the needs of children with broad mental health problems

Fetal Alcohol Syndrome Community Resource Center

7725 E. 33rd Street, Tucson, AZ 85710-6059
520-296-9172

<http://www.come-over.to/FASCRC/>

Web site with lots of articles, resources, links and information on FAS, including a section on how FAS affects behavior.

LD Online

LD OnLine is a service of The Learning Project at WETA, the public broadcasting station in Washington, D.C. LD OnLine is the official website of the Coordinated Campaign for Learning Disabilities, a national campaign designed to promote public awareness of learning disabilities. The LD OnLine Web address is <http://www.ldonline.org>

See this section - LD In Depth

http://www.ldonline.org/ld_indepth/resource-guide.html

Information on topics within the area of learning disabilities. Many articles written by experts, research findings, and news.

Learning Disabilities Association LDA (national)

4156 Library Road, Pittsburgh, PA 15234-1349

412-341-1515

<http://www.ldanatl.org>

National organization with state & local chapters. Lots of information online.

Multi-statewide Outreach Project

<http://ici2.umn.edu/preschoolbehavior/default.html>

Institute on Community Integration, University of Minnesota

201 Pattee Hall, 150 Pillsbury Drive S.E.

Minneapolis, MN 55455

612-626-9528

Positive behavioral supports for young children who engage in challenging behavior. The information on this web site is intended to help families, caregivers, and service providers to:

- understand why a particular behavior may occur,
- help service providers develop intervention strategies for organizing environments to decrease the possibility of challenging behaviors in young children, and
- help families and service providers to learn more about strategies to support children with challenging behaviors.

NAMI (national headquarters)

<http://www.nami.org>

Colonial Place Three, 2107 Wilson Blvd., Suite 300, Arlington, VA 22201

703-524-7600

HelpLine: 800-950-NAMI [6264]

A nonprofit, grassroots, self-help, support and advocacy organization of consumers, families, and friends of people with severe mental illnesses, such as schizophrenia, major depression, bipolar disorder, obsessive-compulsive disorder, and anxiety disorders.

The National Coalition for Parent Involvement in Education (NCPIE)

<http://www.ncpie.org/>

3929 Old Lee Highway, Suite 91-A

Fairfax, VA 22030-2401

703-359-8973

The National Coalition for Parent Involvement in Education (NCPIE) is dedicated to developing effective family/school partnerships in schools throughout America.

See Resources section for information directed toward families and caregivers.

National Early Childhood Technical Assistance Center (NECTAC)

Campus Box 8040, UNC-CH

Chapel Hill, NC 27599-8040

919- 962-2001

<http://www.nectac.org>

NECTAC is a national technical assistance center mostly working with state administrators of early childhood programs, but the web site has lots of good information:

-information on best practices

-lists of contact persons in each state for various early childhood programs.

National Information Center for Children & Youth with Disabilities (NICHCY)

<http://www.nichcy.org>

P.O. Box 1492 Washington, DC 20013

800-695-0285

National information and referral center that provides information on disabilities and disability-related issues for families, educators, and other professionals.

National Parent Information Network (NPIN)

ERIC Clearinghouse on Elementary and Early Childhood Education, Univ. of IL at Urbana-Champaign

Children's Research Center

51 Gerty Drive Champaign, IL 61820-7469

800-583-4135

<http://npin.org/>

The mission of NPIN is to provide access to research-based information about the process of parenting, and about family involvement in education. Great online virtual library of resources.

National Resource Center for Special Needs Adoptions/Spaulding for Children

<http://www.spaulding.org>

16250 Northland Dr., Suite 120 Southfield, MI 48075
248-443-7080

Provides help to children who wait the longest for permanency and support services for their adoptive, foster and kinship families. Nationwide, Spaulding's NRC provides training, consultation and informational materials for professionals, organizations and parents.

Quality Mall

<http://www.qualitymall.org/>

An online showcase of promising practices and innovations that promote quality of life for persons with developmental disabilities. Developed by the Research and Training Center on Community Living at the University of Minnesota's Institute on Community Integration (RTC/ICI), the National Association of State Directors of Developmental Disabilities Services (NASDDDS), and Human Services Research Institute (HSRI). It receives its primary funding is through a grant from the federal Administration on Developmental Disabilities.

Rehabilitation Research & Training Center on Positive Behavioral Support

<http://rrtcpbs.fmhi.usf.edu/>

Division of Applied Research and Educational Support

Department of Child and Family Studies
Louis de la Parte Florida Mental Health Institute
University of South Florida
13301 Bruce B. Downs Blvd. Tampa, FL 33612
813-974-4612

a national research and training effort to develop and disseminate effective, practical, and empirically validated procedures for improving support for individuals with disabilities and problem behavior.

Strategies to Meet IDEA 1997's Discipline Requirements

<http://www.cec.sped.org/bk/focus/1297.html>

Council for Exceptional Children Online resource.

Technical Assistance Center on Positive Behavioral Interventions and Supports (PBIS)

<http://www.pbis.org/>

5262 University of Oregon Eugene, OR 97403-5262
541-346-2505

The Center has been established by the Office of Special Education Programs, US Department of Education to give schools capacity-building information and technical assistance for identifying, adapting, and sustaining effective school-wide disciplinary practices.

U.S. Dept. of Education Cross-Site Indexing Project

<http://search.ed.gov/csi/>

ED's Cross-Site Index allows you to quickly search the complete contents of 200+ ED-sponsored web sites and 150+ education-related resources at other Federal agencies -- a collection of over 300,000 items in all ranging from funding opportunities to lesson plans, from research to regulations. Previously it would have taken many hours to find information distributed across these many sites on such topics as "authentic assessment" and "professional development"; now it takes only a few seconds

Zero to Three National Center for Infants, Toddlers and Families

<http://www.zerotothree.org/>

2000 M Street, NW, Suite 200 Washington, DC 20036
202-638-1144

National organization whose aim is to strengthen and support families, practitioners and communities to promote the healthy development of babies and toddlers.